

HMJ Series

Pump

- Cast iron pump body
- Brass / PPO impeller
- AISI 304 shaft
- Max. Liquid temperature: 60C
- Max. suction: +9m

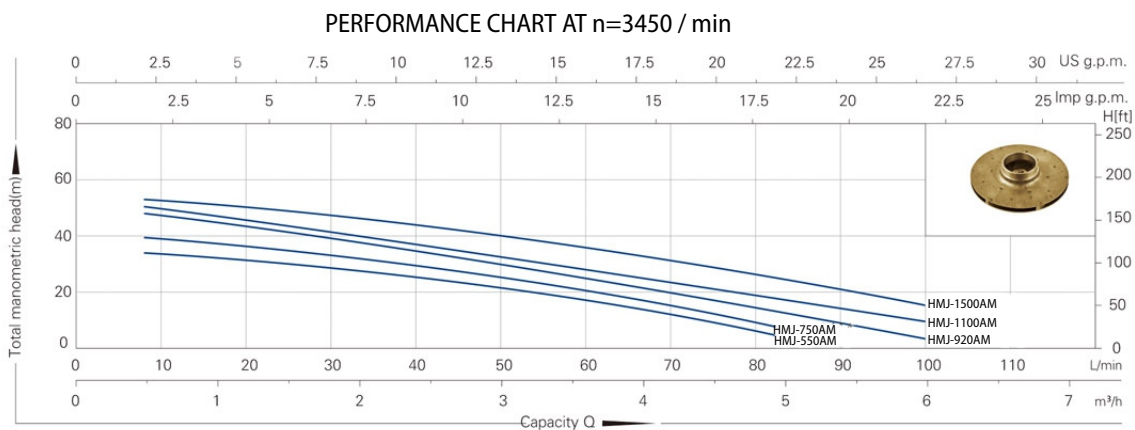
Motor

- C & U bearing
- Motor with copper winding
- Built -in thermal protection for single phase motor
- Insulation class: B
- Protection class: IP44
- Max. ambient temperature: +40C

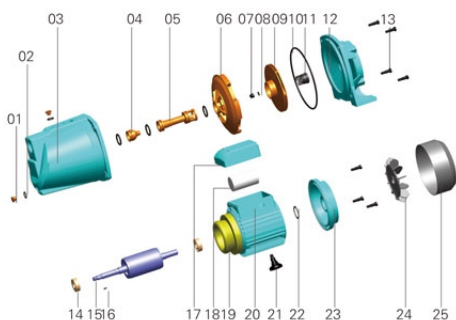


SELF-PRIMING HMJ PUMP SERIES

Pump Type	Power		Inlet/Outlet	Max. Flow L/min	Max Head m	Max. Suct m	G.W kg	Packing Dimension mm	QTY set
	KW	HP							
HMJ-550AM	0.55	0.75	1"X1"	85	36	9	10.5	395x186x214	1870
HMJ-750AM	0.75	1.00	1"X1"	85	42	9	14.0	445x193x230	1420
HMJ-920AM	0.92	1.25	1"X1"	85	48	9	16.5	564x235x260	810
HMJ-1100AM	1.10	1.50	1 ¼"X1"	100	48	9	25.0	565x225x260	850
HMJ-1500AM	1.50	2.00	1 ¼"X1"	110	55	9	26.0	565x225x260	850



THE STRUCTURE CODE AND NAME OF THE PUMP



No	Name
0 1	Copper plug
0 2	'O' ring
0 3	Pump casing
0 4	Venturi nozzle
0 5	Venturi tube
0 6	Diffuser
0 7	Cap nut
0 8	Gasket
0 9	Impeller

No	Name
10	'O' ring
11	Mechnaical seal
12	Pump support
13	Hexagonal head bolt
14	Bearing
15	Rotor
16	Key
17	Capacitor box
18	Capacitor

No	Name
19	Stator
20	Base
21	Arm-brace
22	Wave washer
23	End plate
24	Fan
25	Fan cover