

HE • 50mm Full-Passage Submersible Pump

Features

- Recess vortex impeller
- GAS 2" discharge
- 2 poles -1/2HP ~ 2HP perfect performance
- EKK-Burgmann silicon double mech. seal
- Stainless steel motor housing.
- 50mm free passage

Applications

- Heavy-duty applications with soiled biological wastewater, sewage, rainwater.
- domestic and professional use.

Operating limits

- Maximum operating temperature : 40°C
- Viscosity of treated fluid : 1mm²/s
- Maximum immersion depth : 10m
- Density of treated fluid : 1kg/dm³
- Max starts per hour : 20

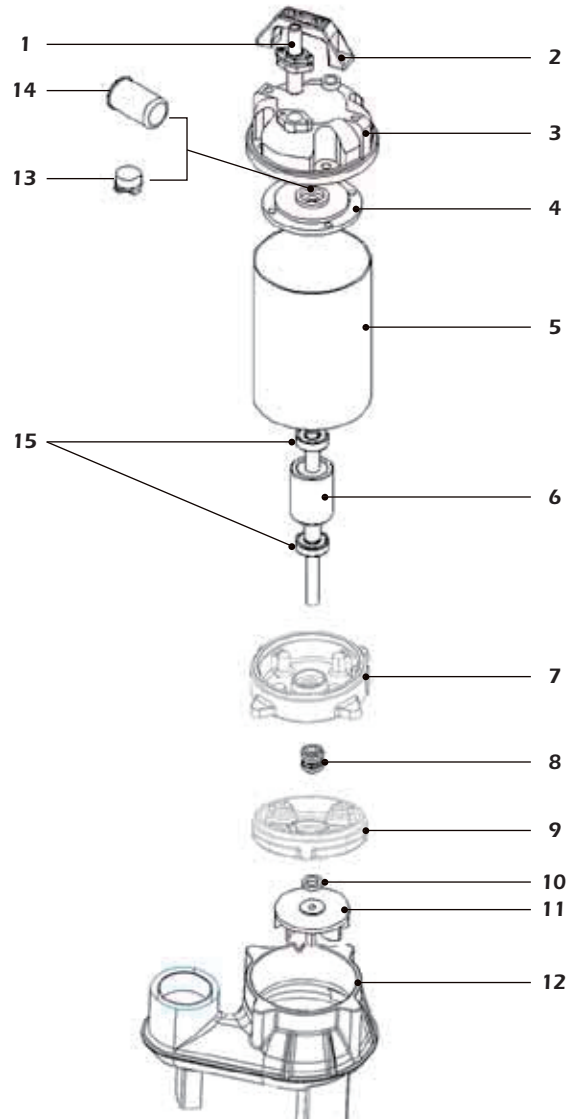
Parts and Material list

No	Part	Material
1	Cable	H07RNF
2	Handle	Nylon 6
3	Motor Cover	0.5~1HP : Nylon 66 1.5~2HP : Cast Iron
4	Bracket	Cast Iron
5	Motor Housing	SS-304
6	Rotor & Shaft	SS-410
7	Oil Chamber	Cast Iron
8	Double Mech. Seal	CA/CE+SIC/SIC
9	Seal Housing	Cast Iron
10	Oil Seal	NBR
11	Impeller	Cast Iron
12	Pump Volute	Cast Iron
13	Protector	Klixon
14	Capacitor (Single Phase Only)	
15	Bearing	NTN

- All technical information is subject to change without notice.

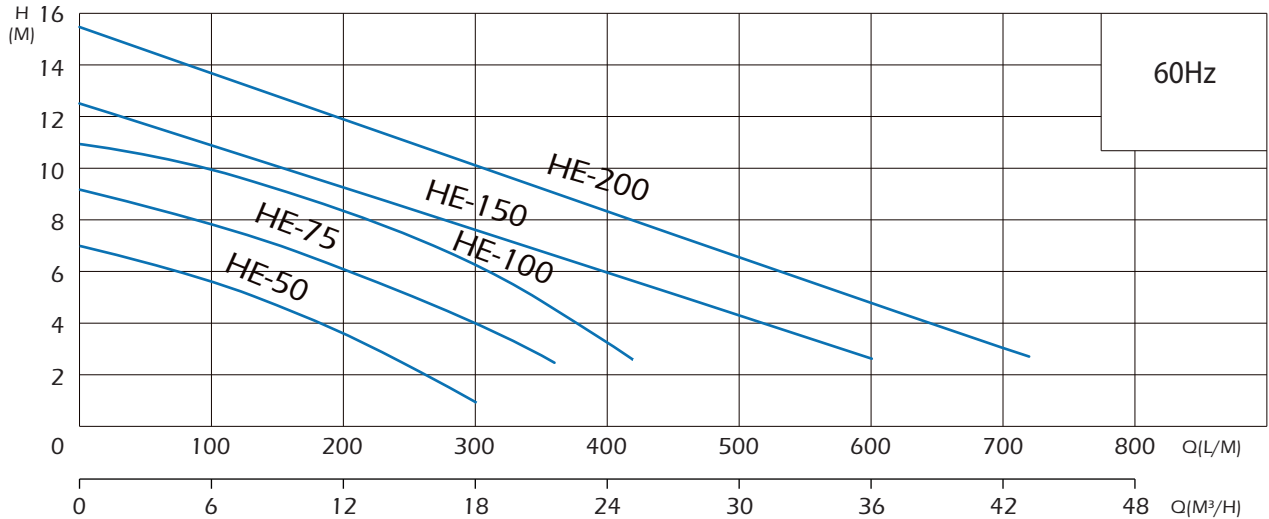


HE-Series



HE • 50mm Full-Passage Submersible Pump

Performance Curves



Performance Table

Type	Q L/S	0	1	2	3	4	5	6	7	8	9	10	11	12
	Q L/M	0	60	120	180	240	300	360	420	480	540	600	660	720
	Q M³/H	0	3.6	7.2	10.8	14.4	18	21.6	25.2	28.8	32.4	36	39.6	43.2
HE-50	H[m]	7.1	6.2	5.3	4.2	2.8	1.0							
HE-75		9.2	8.4	7.6	6.6	5.4	4.0	2.5						
HE-100		11.0	10.4	9.6	8.8	7.6	6.2	4.4	2.5					
HE-150		12.5	11.6	10.7	9.9	8.9	7.8	6.7	5.6	4.6	3.6	2.6		
HE-200		15.5	14.5	13.5	12.4	11.3	10.2	9.1	7.9	6.9	5.8	4.8	3.7	2.7

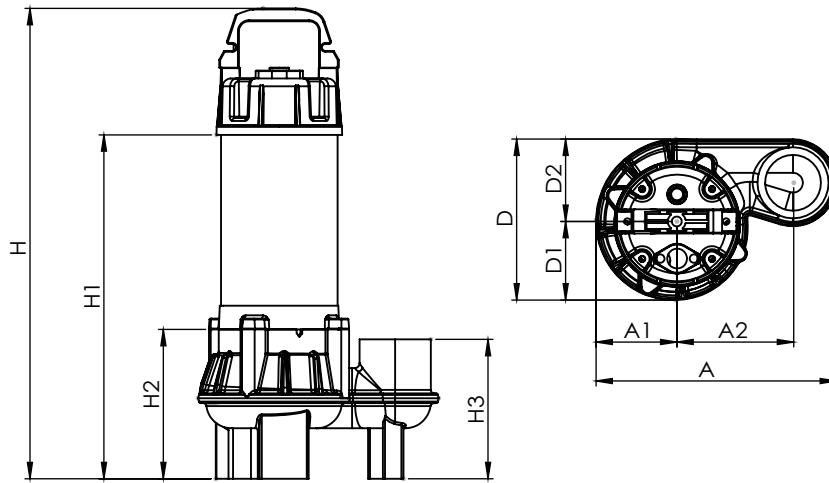
Specifications

Type	Output		Discharge	Voltage		Pole	Amp			Weight
	HP	kw		Inch	1 Phase		3 Phase	1 Phase 230V	3 Phase 380V	
HE-50	0.5	0.37	2"	230	380/400	2	3.4	1.2	1.1	14
HE-75	0.75	0.55	2"	230	380/400	2	5.8	1.7	1.6	16
HE-100	1	0.75	2"	230	380/400	2	6.5	2.3	2.2	17
HE-150	1.5	1.1	2"	230	380/400	2	9	3.0	2.9	25
HE-200	2	1.5	2"	230	380/400	2	12	3.5	3.4	26

- ° Equipped 10M H07RNF cable
- ° Single phase can be equipped with float switch

HE • 50mm Full-Passage Submersible Pump

Dimensions



Type	Dimensions (mm)									
	A	A1	A2	D	D1	D2	H	H1	H2	H3
HE-50	244	82	118	164	80	84	460	330	151	141
HE-75	244	82	118	164	80	84	482	352	151	141
HE-100	244	82	118	164	80	84	497	367	151	141
HE-150	271	93	135	186	88	98	506	376	151	143
HE-200	271	93	135	186	88	98	520	396	151	143

Parts

KLIXON

Thermal protector for 1 phase

Overload protector for 3 phase

EKK-Burgmann silicon Double mech. seal

Pump volute 2" solid free-passage

Cable gland sys Water tight cable gland with Epoxy Potting

Long Life - Bearing (Japan NTN)

Oil Seal Extra protection for the leakage