



## UGMO Series 4" Oil Filled Submersible Motors 3Wire, 60Hz

### MATERIALS

Component	Material
Motor Shell	304 Stainless steel
Sand Guard	NBR
Cable Connector	EPDM
Upper end bracket cover	304 Stainless steel
Upper end bracket	Zinc plated cast iron
Mechanical seal	Ceremic/Carbon
Shaft (0.5 - 3 HP)	304 Stainless steel
Shaft (4 - 10HP)	630 Stainless steel
Rotor (0.5 - 3 HP)	Aluminum
Rotor (4 - 10HP)	Copper
Connector	PPS
Winding	Copper
Lower end bracket	Aluminum
Lower end bracket cover	304 Stainless steel
Diaphragm	NBR

### OPERATING CONDITIONS

Max. voltage variation	10% / -10%
Max. starts	40 h
Max. water temperature	35 °C
Max. immersion depth	200 m

### GENERALSPECIFICATIONS

Mounting flange:	4" NEMA standard
Insulation class:	F
Standard Voltage:	
<b>60 Hz:</b>	1~ 110V or 230V 3~230V or 400V

Cable length:	
0.37 ~ 1.5kW:	1.7m
2.2 ~ 7.5kW:	2.5m



### FEATURES

- SPCO rewindable 4" oil filled submersible motors are designed to operate dependably in 4" and larger boreholes.
- Removable waterproof cable connector for easy maintenance operations.
- Cable materials are CE approved (for potable water applications).
- Non-toxic oil - Premium quality, colorless white oil meeting the requirements of international and national authorities for pharmacopoeia white oils.
- Special stator design for high starting torque in single-phase models.
- Unique single-phase electrical design for PSC starting, and starting capacitor + PSC starting.
- Motor casing, shaft, upper cover and bottom end made of stainless steel.
- Zinc-plate cast iron upper bracket.
- Stators are designed for higher efficiency and the ability to operate within wider voltage fluctuations.
- Use of high quality European made components such as mechanical seal, cable connectors, copper winding wires and insulations.
- All motors are 100% tested.
- **All technical information are subject to change without further notice.**

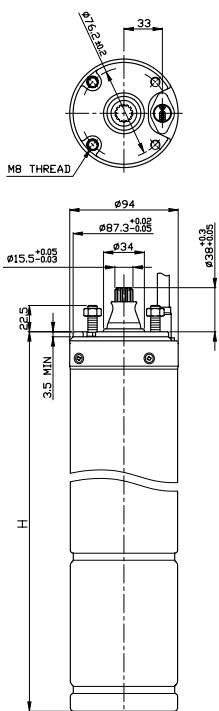
**TECHNICAL DATA**

**SINGLE-PHASE MOTORS 60 Hz PSC**

Motor Type	P2		Voltage V	S.F --	In A	Imax A	Istart A	Efficiency %	Nn RPM	Thrust Load N	Capacitor µF	Cable	
	kW	HP										mm2	m
4R261	0.37	0.5	110	1.6	8.5	9.8	30	64	3430	2000	65	1.5	1.7
4R251	0.37	0.5	230	1.6	4.8	5.2	15	64	3430	2000	16	1.5	1.7
4R291	0.37	0.5	254	1.6	4.3	4.7	13.8	58	3430	2000	12.5	1.5	1.7
4R262	0.55	0.75	110	1.5	10.9	12.8	38	65	3440	2000	80	1.5	1.7
4R252	0.55	0.75	230	1.5	5.6	6.6	19	65	3440	2000	20	1.5	1.7
4R292	0.55	0.75	254	1.5	5.3	6	17.1	62	3430	2000	16	1.5	1.7
4R263	0.75	1	110	1.4	11.5	14.5	50	68	3440	2000	100	1.5	1.7
4R253	0.75	1	230	1.4	6.3	7.6	25	68	3440	2000	25	1.5	1.7
4R293	0.75	1	254	1.4	5.5	6.7	19.3	66	3430	2000	20	1.5	1.7
4R264	1.1	1.5	110	1.3	17.4	20.2	50.69	68	3440	2000	140	1.5	1.7
4R254	1.1	1.5	230	1.3	8.7	10.3	34	69	3450	2000	35	1.5	1.7
4R294	1.1	1.5	254	1.3	7.9	9.2	25.7	65	3450	2000	30	1.5	1.7
4R256	1.5	2	230	1.25	10.6	12.2	41	72	3450	2000	40	1.5	1.7
4R296	1.5	2	254	1.25	11	12	38	68	3450	2000	35	1.5	1.7
4R357	2.2	3	230	1.15	14.4	16.1	45	70	3450	3000	55	1.5	2.5
4R397	2.2	3	254	1.15	14	15.4	48.9	71	3450	3000	45	1.5	2.5
4R558	3.7	5	230	1.15	25	28	64	71	3450	5000	75	2	2.5

**THREE-PHASE MOTORS 60 HZ DOL**

Motor Type	P2		Voltage V	S.F --	In A	Imax A	Istart A	Efficiency %	Nn RPM	Thrust Load N	Cable	
	kW	HP									mm2	m
4R280	0.37	0.5	230	1.6	2.8	3.3	10	68	3450	2000	1.5	1.7
4R281	0.55	0.75	230	1.5	3.8	4.3	17	69	3450	2000	1.5	1.7
4R282	0.75	1	230	1.4	4.5	5.2	24	72	3450	2000	1.5	1.7
4R283	1.1	1.5	230	1.3	5.7	6.6	33	72	3450	2000	1.5	1.7
4R284	1.5	2	230	1.25	7.6	8.5	40	74	3450	2000	1.5	1.7
4R386	2.2	3	230	1.15	10.3	11.2	48	74	3450	3000	1.5	2.5
4R587	3.7	5	230	1.15	17.5	18.7	109	75	3450	5000	1.5	2.5
4R566	4	5.5	230	1.15	18.1	20	109	75	3450	5000	1.5	2.5
4R588	5.5	7.5	230	1.15	25.3	27.6	134	75	3450	5000	2.0	2.5
4R270	0.37	0.5	400	1.6	1.6	1.9	9	68	3450	2000	1.5	1.7
4R271	0.55	0.75	400	1.5	2.2	2.5	11	69	3450	2000	1.5	1.7
4R272	0.75	1	400	1.4	2.6	3	14	72	3450	2000	1.5	1.7
4R273	1.1	1.5	400	1.3	3.3	3.8	19	72	3450	2000	1.5	1.7
4R274	1.5	2	400	1.25	4.4	4.9	23	74	3450	2000	1.5	1.7
4R376	2.2	3	400	1.15	6	6.5	28	74	3450	3000	1.5	2.5
4R577	3.7	5	400	1.15	10	11	63	75	3450	5000	1.5	2.5
4R567	4	5.5	400	1.15	10.5	11.6	63	76	3450	5000	1.5	2.5
4R578	5.5	7.5	400	1.15	14.5	15.9	78	75	3450	5000	2.0	2.5
4R579	7.5	10	400	1.15	20	21.8	92	76	3450	5000	2.0	2.5



**SINGLE-PHASE MOTORS**

P2		H mm	Weight Kg	Thrust Load N
kW	HP			
0.37	0.5	346	7.3	2000
0.55	0.75	365	8.2	2000
0.75	1	380	8.8	2000
1.1	1.5	405	10.0	2000
1.5	2	440	11.5	2000
2.2	3	495	14.0	3000
3	4	607	19.4	5000
3.7	5	683	22.7	5000
4	5.5	683	22.8	5000

**THREE-PHASE MOTORS**

P2		H mm	Weight Kg	Thrust Load N
kW	HP			
0.37	0.5	330	6.7	2000
0.55	0.75	346	7.4	2000
0.75	1	365	8.2	2000
1.1	1.5	380	8.9	2000
1.5	2	405	10.0	2000
2.2	3	440	11.6	3000
3	4	516	15.2	5000
3.7	5	607	19.5	5000
4	5.5	607	19.5	5000
5.5	7.5	683	23.1	5000
7.5	10	783	27.5	5000

• All technical information are subject to change without further notice.