


SPCO
makes life easier



UGP 6"
Submersible Deep Well
Pumps, 60Hz

Approvals



Expert's report

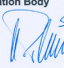
Confirmation on preparation of an expert's report


CERTIFEL	Expert ref.no. CH-10-IK-0173.Exp.A page 1 of 1
Product	Submersible pumps
Applicant	Swiss Pump Company, Moosweg 36, CH-3645 Gwatt
Manufacturer	Swiss Pump Company, Moosweg 36, CH-3645 Gwatt
Manufactured at/Factory	Swiss Pump Company, Moosweg 36, CH-3645 Gwatt
Trade-mark	SPCO, SWP
Type/Model	UG... QF... Sewage
Rated, characteristics	220-240V, 3x220V, 3x400V, 3x480V; 50/60Hz Power range: >30 - 300kW, IP68
Standards safety	EN 60204-1:06 + A1:09 IEC 60204-1(ed.0),am1
Standards EMC	---
Other standards	---

For the product an expert's report with regard to the aforementioned normative documents, respectively technical features has been issued.
The results are given in the report's ref.no.
10-IK-0173.01

**Electrosuisse
National Certification Body**

Martin Pfister
Product Certification





SCES 035
(EN 45011)

Fehraltorf, 2010-06-11

SEV Verband für Elektro-, Energie- und Informationstechnik
SEV Association pour l'électrotechnique, les technologies de l'énergie et de l'information
SEV Associazione per l'elettrotecnica, le tecnologie energetiche e l'informatica
SEV Association for Electrical Engineering, Power and Information Technologies

Luppenstrasse 1
CH-6320 Fehraltorf
Tel: +41 44 956 11 11
Fax: +41 44 956 11 22
info@electrosuisse.ch
www.electrosuisse.ch



THE INTERNATIONAL CERTIFICATION NETWORK

CERTIFICATE

IQNet and SQS
hereby certify that the organisation

Swiss Pump Company AG
3645 Thun-Gwatt
Switzerland

Certified area
Whole Company

Field of activity
**Design, development, manufacture and sale of products
for the transportation of liquids**

has implemented and maintains a
Management System
which fulfills the requirements of the following standard(s)

ISO 9001:2008

Scope No(s): 17, 18, 19
Issued on: 2012-02-20
Validity date: 2015-02-19
Registration Number: **CH-32160**


 Michael Drechsel
President of IQNet


 Roland Glaser
Managing Director SQS



IQNet Partners*:
 AFNOR Spain, AFNOR Certification France, AIB-Vinçotte International Belgium, ANCE Mexico, APCER Portugal, CCC Cyprus,
 CTRQ Italy, CQC China, CQM China, CQS Czech Republic, CQC Cert Croatia, DQS Holding GmbH Germany, DS Denmark,
 ELOT Greece, FCAV Brazil, FONDONORMA Venezuela, KONTEC Colombia, IMNC Mexico, INNORPI Tunisia,
 Inspecta Certification Finland, IRAM Argentina, JQA Japan, KPCS Korea, MEST Hungary, NENAS AS Norway, NSAI Ireland,
 PCBC Poland, Quality Austria Austria, RR Russia, SII Israel, SIQ Slovenia, SIRIM QAS International Malaysia, SQS Switzerland, SRAC Romania,
 TEST St. Petersburg Russia, TSE Turkey, TÜRKÜS Serbia.
 IQNet is represented in the USA by: AFNOR Certification, CISO, DQS Holding GmbH and NSAI Inc.
 * The list of IQNet partners is valid at the time of issue of this certificate. Updated information is available under: www.iqnet-certification.com



General Data

Description	page	4
Applications		4
Operation condition		4
Performance range		5
Material specification		6
Parts		7

Technical Data

UGP 50	page	8
UGP 75		10
UGP 135		12
UGP 180		14
UGP 220		16

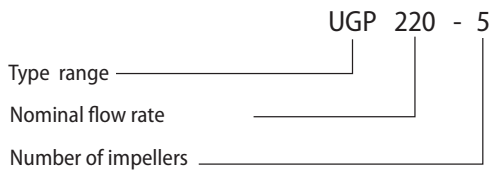
Description

The 6" submersible pumps for high pressure and flow rates, particularly equipped with a high rigidity Silicon-Carbide(SiC) Bearing, provide reliability and quality guaranteed.

Applications

- Water Supply.
- Irrigation.
- Pressure Boosting.

Type Key

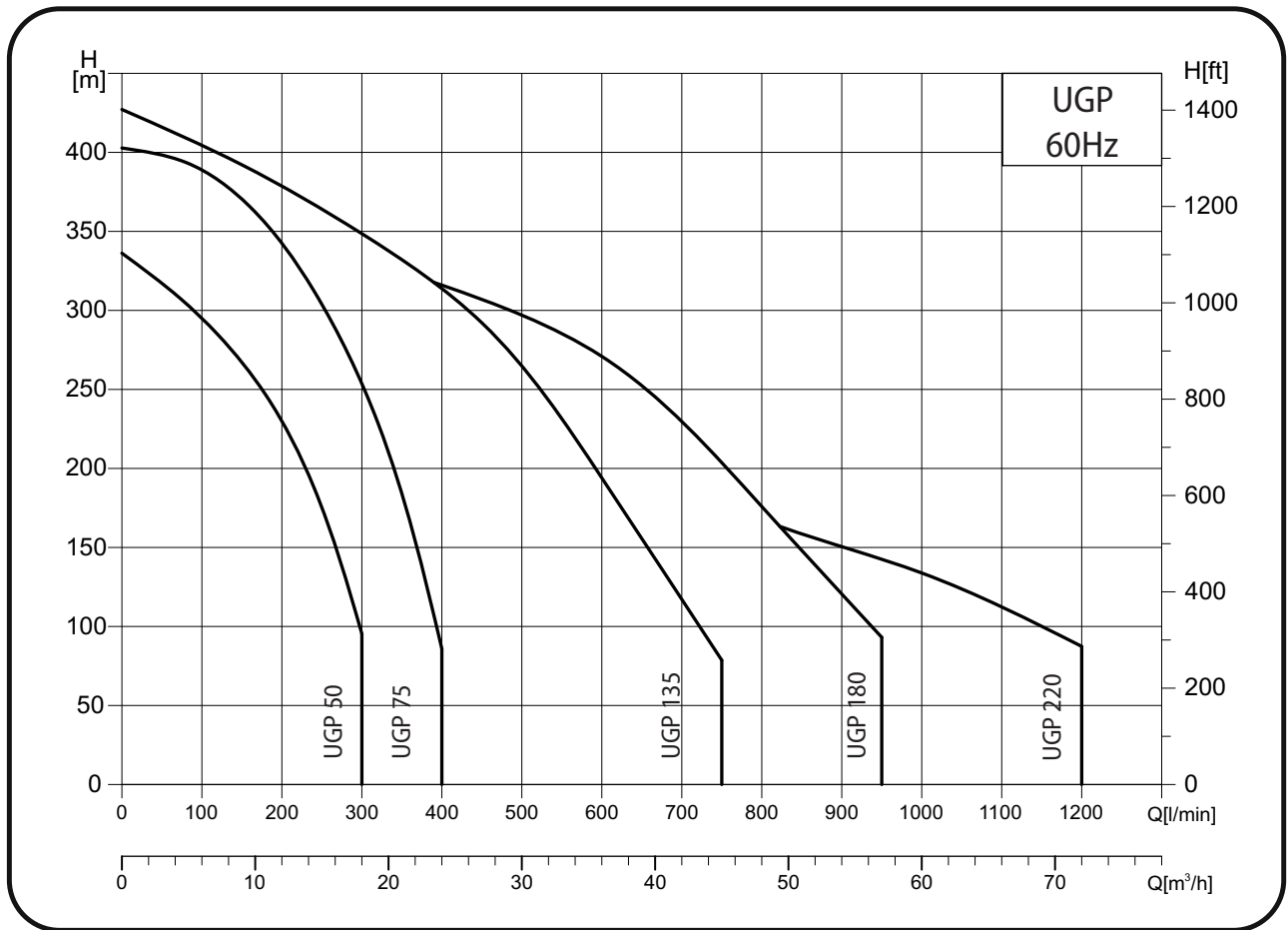


Operation Condition

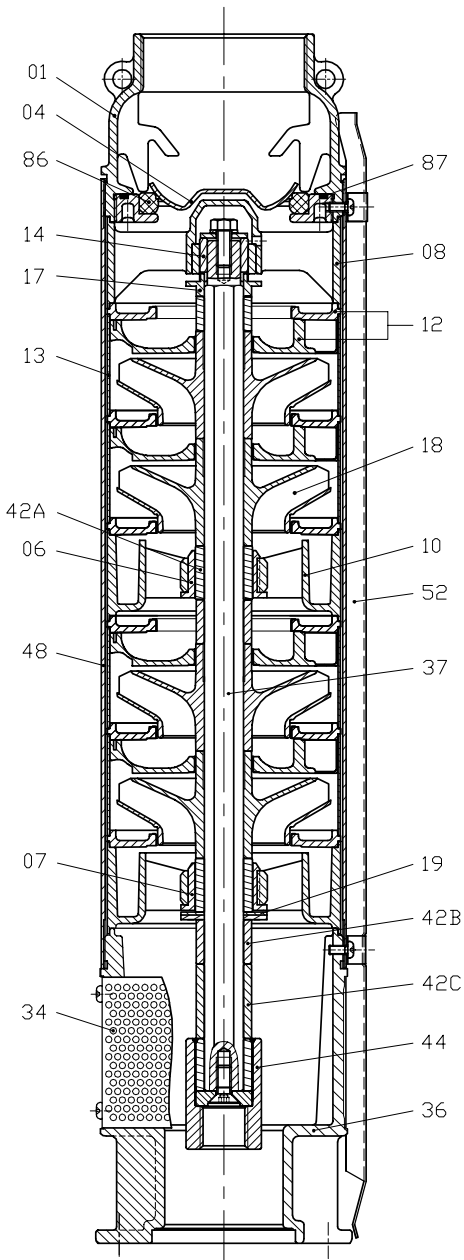
Flow rate Q: up to 72 m³/h at 3450 rpm
 Head H: max. 430m at 3450 rpm
 Max. permissible quantity of sand: 50g/m³



Performance range



Material Specification 6"



Pos.	Components	Material	Standard
01	Discharge	Stainless Steel	304
04	Valve cone	Stainless Steel	304
06	Bearing	POM+PTFE	
07	Bearing	Bronze	
08	Upper bearing spider	SSS304 + Silicon carbide	
10	Bearing spider	Noryl	
12	Diffuser	Glass filled polycarbonate	
13	Diffuser casing	Stainless Steel	304
14	Bearing ring	Silicon carbide	
17	Sleeve for baffle	Stainless Steel	304
18	Impeller	Noryl	
19	Counter thrust bearing plate	Carbon fiber/PTFE	
34	Strainer	Stainless Steel	304
36	Suction Interconnector	Stainless Steel	304
37	Pump shaft	Stainless Steel	304
42A	Shaft sleeve	Stainless Steel	304
42B	Shaft sleeve	Noryl	
42C	Shaft sleeve	Noryl	
44	Coupling	Stainless Steel	304
48	Pump casing	Stainless Steel	304
52	Cable Guard	Stainless Steel	304
86	Valve seat	SS304+NBR	
87	O-ring	NBR	

Parts

Discharge head and motor adapter

Discharge head and motor adapter are precision machined cast 304 stainless steel for superior strength and durability. The motor adapter is NEMA standard.

Inlet Strainer

The strainer is made from stamped stainless steel 304 for rigidity.

Non-Return Valve (NRV)

All pumps are equipped with a reliable non-return valve made from stainless steel 304, fitted in the discharge to prevent any back flow of water and alleviate any water hammer to the pumps.

Impeller and Impeller Bowls

Impellers are floating type made with Noryl for superior handling together with glass filled polycarbonate diffusers make the super strong pumps for maximum wear and abrasive resistance.

The materials are FDA compliant materials.

Impeller Bowls are made from Stainless steel 304 maximizing wear from abrasion.

Shaft Coupling

Shaft Coupling is made from stainless steel 304 for easy alignment to the motor shaft.

Pump Shaft

Pump shaft is made from hex stainless steel 304 bar material for high corrosion resistance.

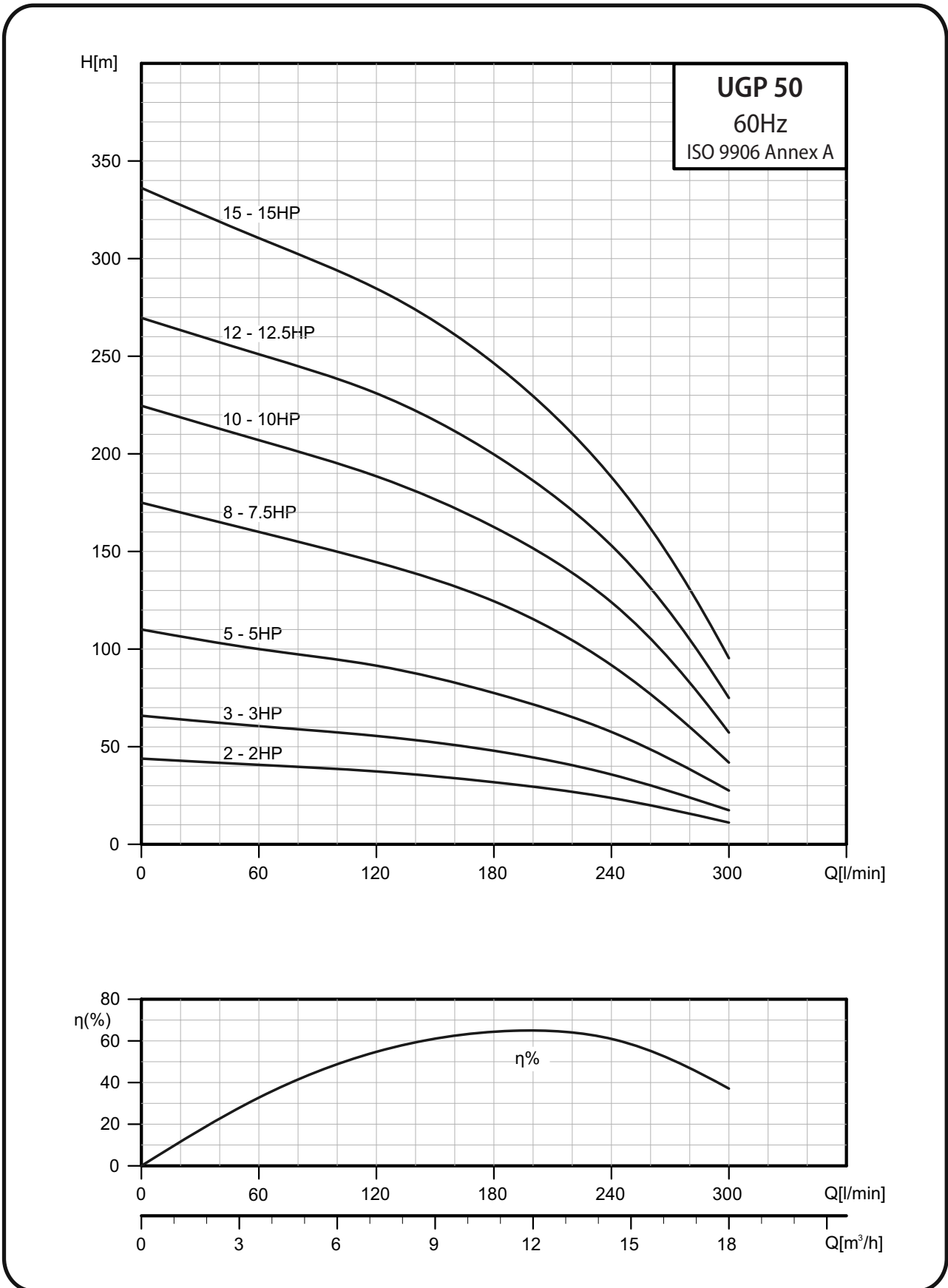
Bearing

Bearing is made with Polyacetal for strong wear and abrasive resistance.

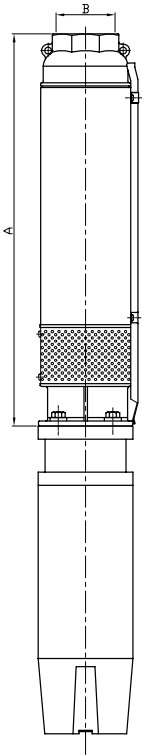
Pump Body

Pump body is covered by a thick 304 stainless steel casing, ensures optimum resistance to abrasion.

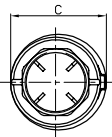
UGP 50 - Performance Curves



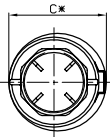
UGP 50 - Technical Data



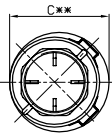
Model	Power		Type	Dimensions [mm]					Weight [kg]
	kW	HP		A	B	C	C*	C**	
UGP 50-2	1.5	2	4"	425	NPT3" RP3"	138			8.2
UGP 50-3	2.2	3	4"	463		138			8.9
UGP 50-5	3.7	5	4"	539		138			10.3
UGP 50-8	5.5	7.5	4"	653		138			12.5
UGP 50-10	7.5	10	4"	729		138			13.8
UGP 50-8	5.5	7.5	6"	667			141	144	13.2
UGP 50-10	7.5	10	6"	743			141	144	14.6
UGP 50-12	9.3	12.5	6"	819			141	144	15.9
UGP 50-15	11	15	6"	933			141	144	17.8



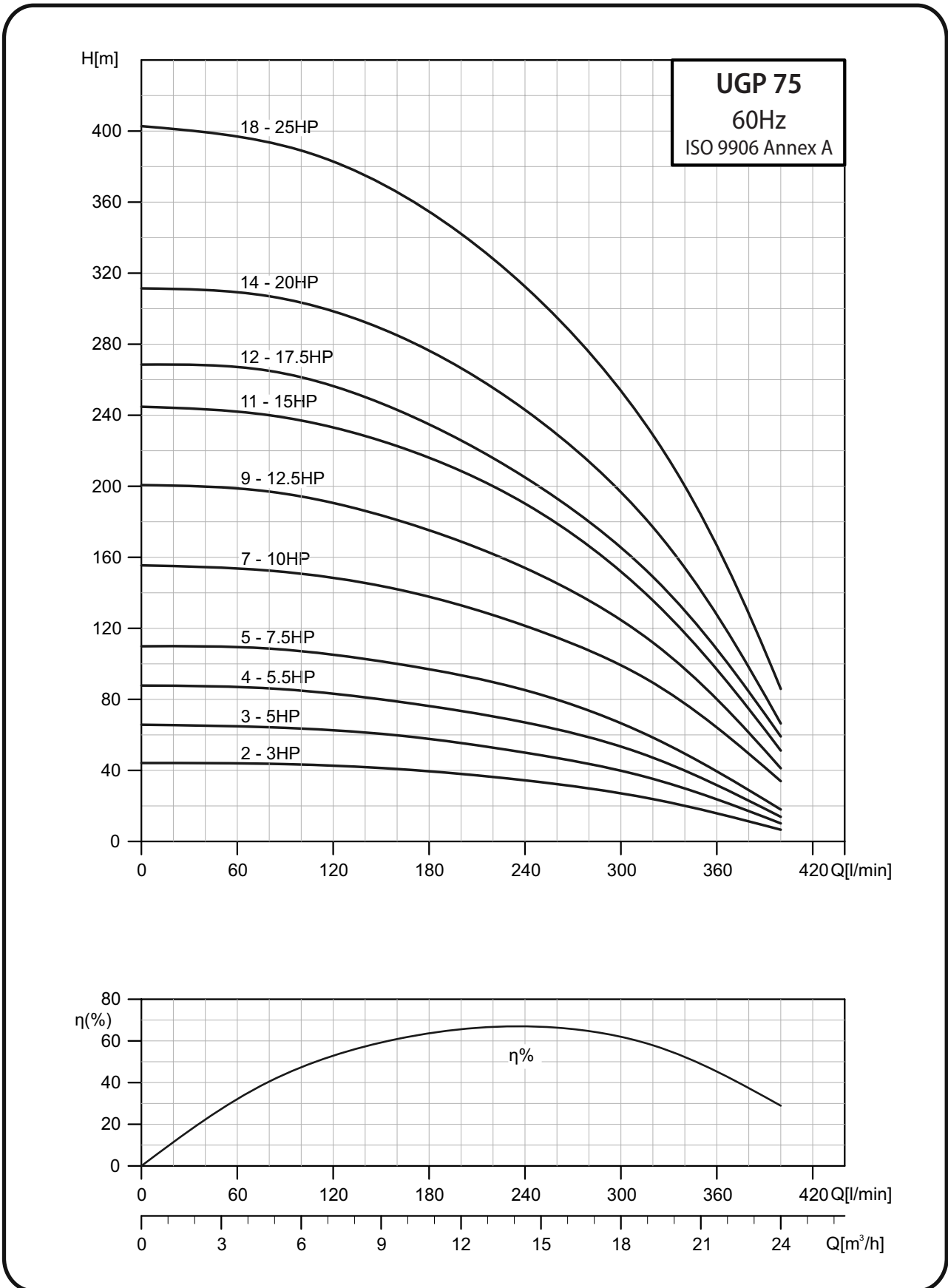
4" motor



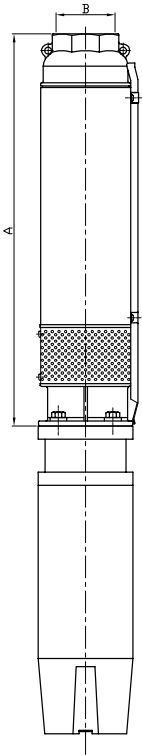
6" motor



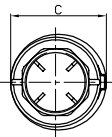
UGP 75 - Performance Curves



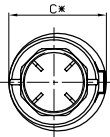
UGP 75 - Technical Data



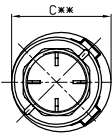
Model	Power		Type	Dimensions [mm]					Weight [kg]
	kW	HP		A	B	C	C*	C**	
UGP 75-2	2.2	3	4"	425	NPT3" RP3"	138			8.2
UGP 75-3	3.7	5	4"	463		138			8.9
UGP 75-4	4	5.5	4"	501		138			9.6
UGP 75-5	5.5	7.5	4"	539		138			10.3
UGP 75-7	7.5	10	4"	615		138			11.7
UGP 75-5	5.5	7.5	6"	553			141	144	11.1
UGP 75-7	7.5	10	6"	629			141	144	12.5
UGP 75-9	9.3	12.5	6"	705			141	144	13.9
UGP 75-11	11	15	6"	781			141	144	15.2
UGP 75-12	13	17.5	6"	819			141	144	15.8
UGP 75-14	15	20	6"	895			141	144	17.2
UGP 75-18	18.5	25	6"	1047			141	144	19.9



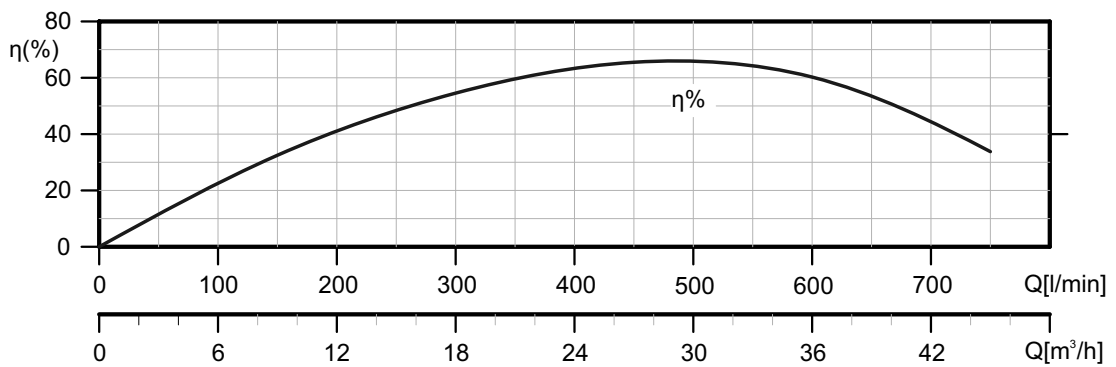
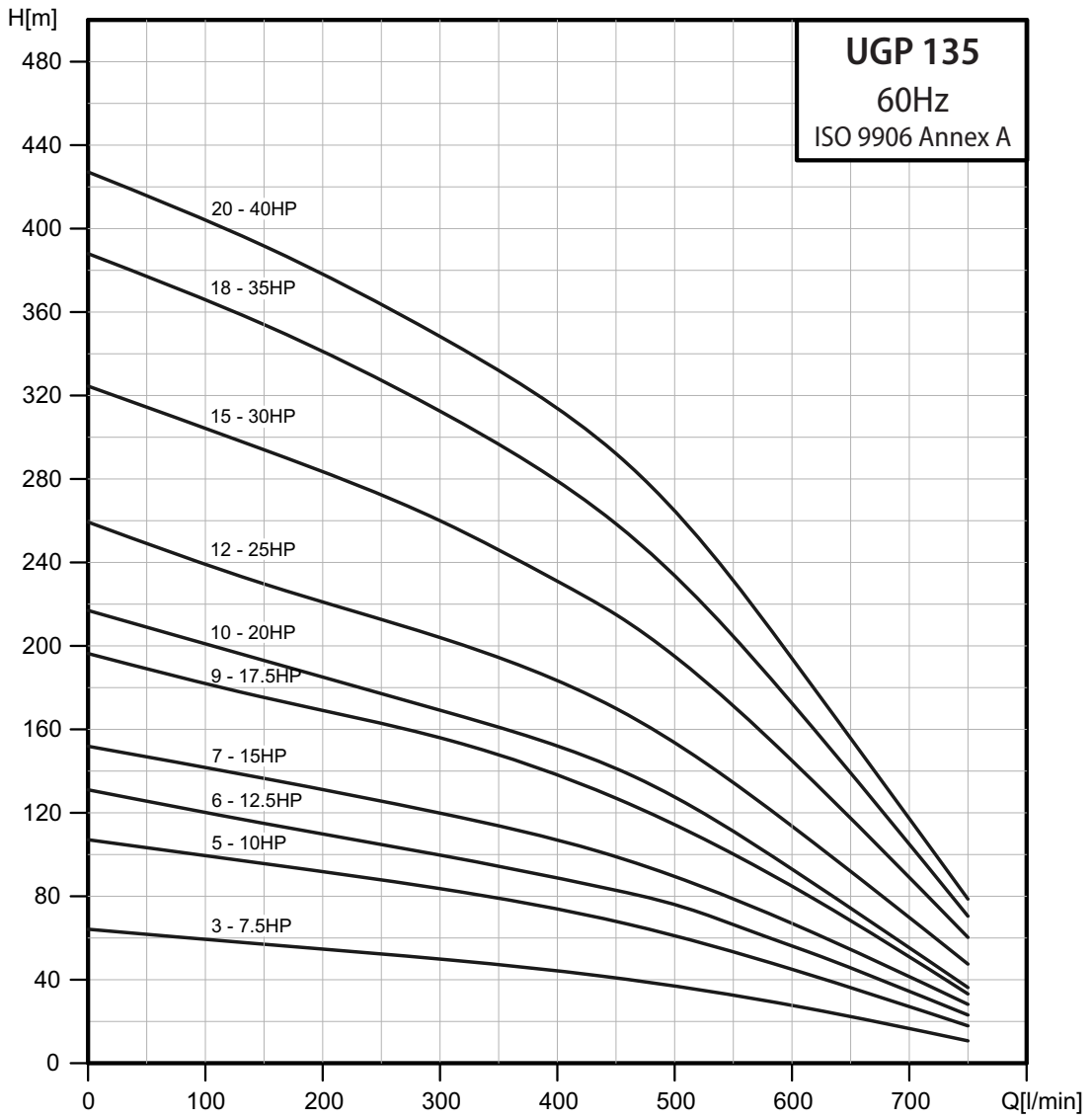
4" motor



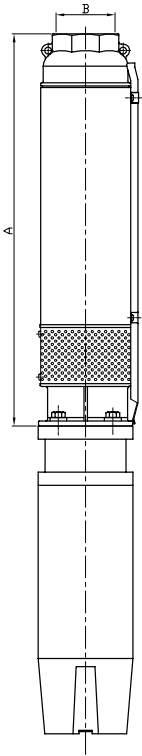
6" motor



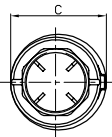
UGP 135 - Performance Curves



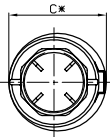
UGP 135 - Technical Data



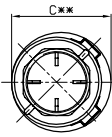
Model	Power		Type	Dimensions [mm]					Weight [kg]	
	kW	HP		A	B	C	C*	C**		
UGP 135-3	5.5	7.5	4"	520	NPT3" RP3"	138			9.9	
UGP 135-5	7.5	10	4"	634		138			11.8	
UGP 135-3	5.5	7.5	6"	534				141	144	10.7
UGP 135-5	7.5	10	6"	648				141	144	12.5
UGP 135-6	9.3	12.5	6"	705				141	144	13.5
UGP 135-7	11	15	6"	762				141	144	14.4
UGP 135-9	13	17.5	6"	876				141	144	16.1
UGP 135-10	15	20	6"	933				141	144	17
UGP 135-12	18.5	25	6"	1047				141	144	18.9
UGP 135-15	22	30	6"	1218				141	144	21.6
UGP 135-18	26	35	6"	1389				141	144	24.3
UGP 135-20	30	40	6"	1555				141	144	27



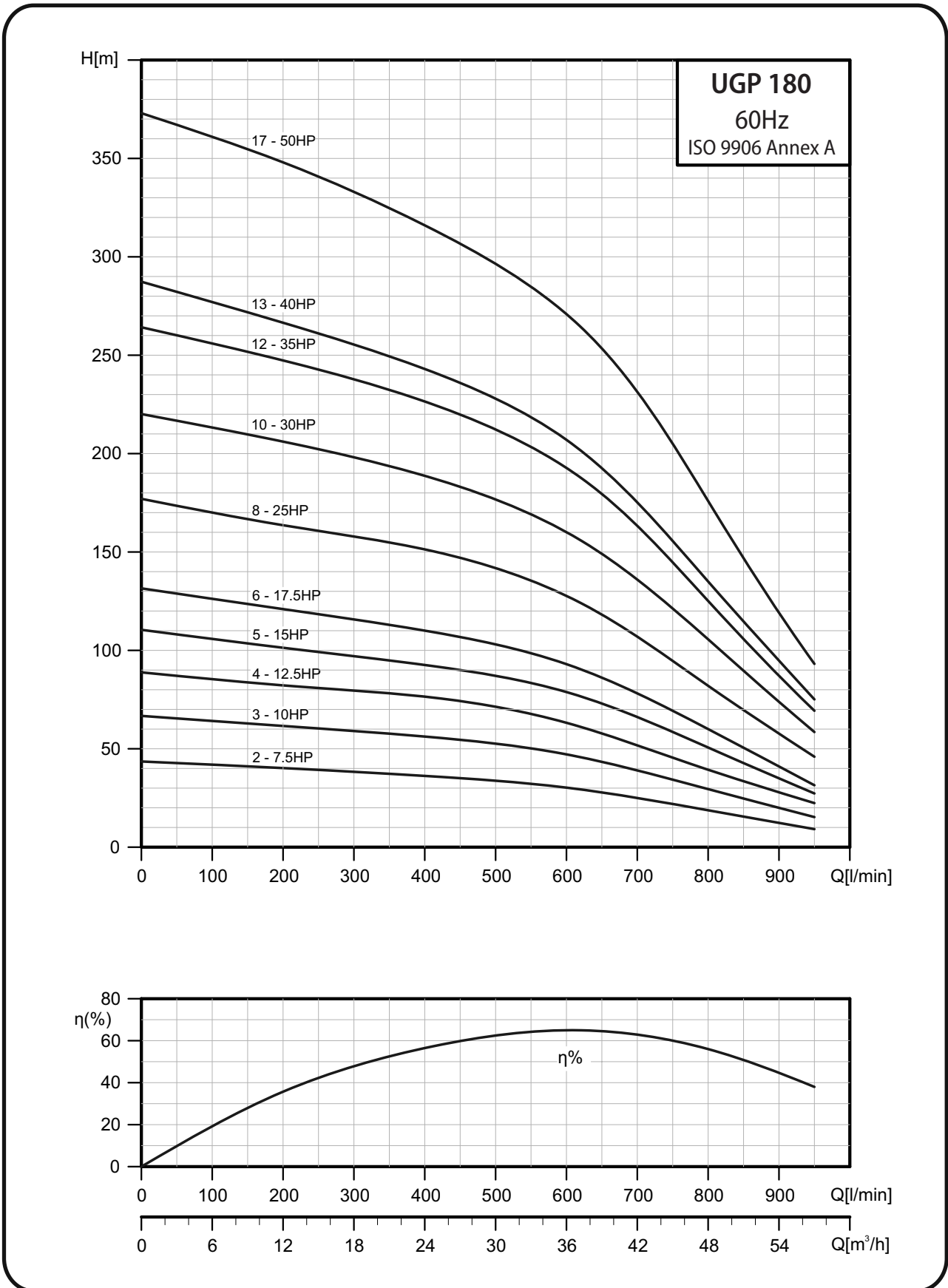
4" motor



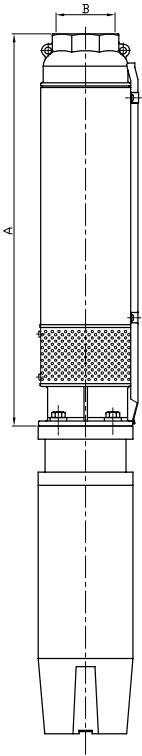
6" motor



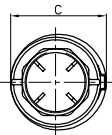
UGP 180 - Performance Curves



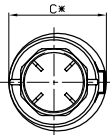
UGP 180 - Technical Data



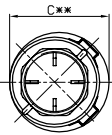
Model	Power		Type	Dimensions [mm]					Weight [kg]	
	kW	HP		A	B	C	C*	C**		
UGP 180-2	5.5	7.5	4"	469	NPT3" RP3"	138			8.9	
UGP 180-3	7.5	10	4"	529		138			9.9	
UGP 180-2	5.5	7.5	6"	483				141	144	9.8
UGP 180-3	7.5	10	6"	543				141	144	10.7
UGP 180-4	9.3	12.5	6"	603				141	144	11.6
UGP 180-5	11	15	6"	663				141	144	12.6
UGP 180-6	13	17.5	6"	723				141	144	13.6
UGP 180-8	18.5	25	6"	843				141	144	15.5
UGP 180-10	22	30	6"	963				141	144	17.4
UGP 180-12	26	35	6"	1083				141	144	19.2
UGP 180-13	30	40	6"	1143				141	144	20.3
UGP 180-17	37	50	6"	1435				141	144	24.9



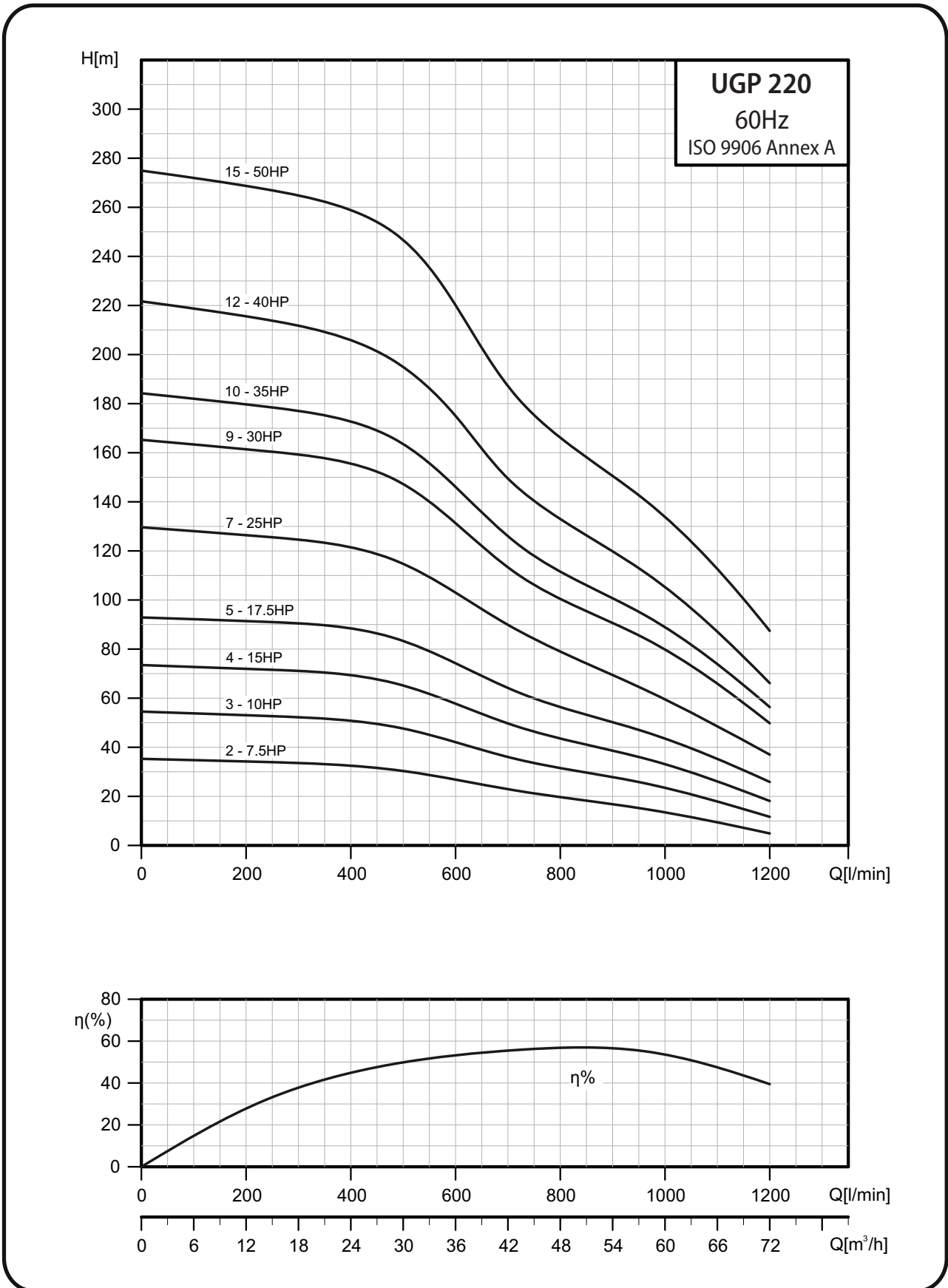
4" motor



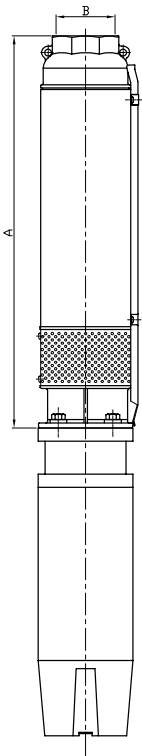
6" motor



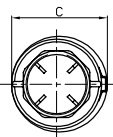
UGP 220 - Performance Curves



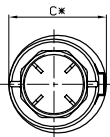
UGP 220 - Technical Data



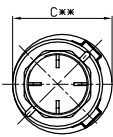
Model	Power		Type	Dimensions [mm]					Weight [kg]
	kW	HP		A	B	C	C*	C**	
UGP 220-2	5.5	7.5	4"	469	NPT3" RP3"	138			8.9
UGP 220-3	7.5	10	4"	529		138			9.9
UGP 220-2	5.5	7.5	6"	483			141	144	9.8
UGP 220-3	7.5	10	6"	543			141	144	10.7
UGP 220-4	11	15	6"	603			141	144	11.7
UGP 220-5	13	17.5	6"	663			141	144	12.6
UGP 220-7	18.5	25	6"	783			141	144	14.5
UGP 220-9	22	30	6"	903			141	144	16.5
UGP 220-10	26	35	6"	963			141	144	17.5
UGP 220-12	30	40	6"	1083			141	144	19.5
UGP 220-15	37	50	6"	1263			141	144	22.6

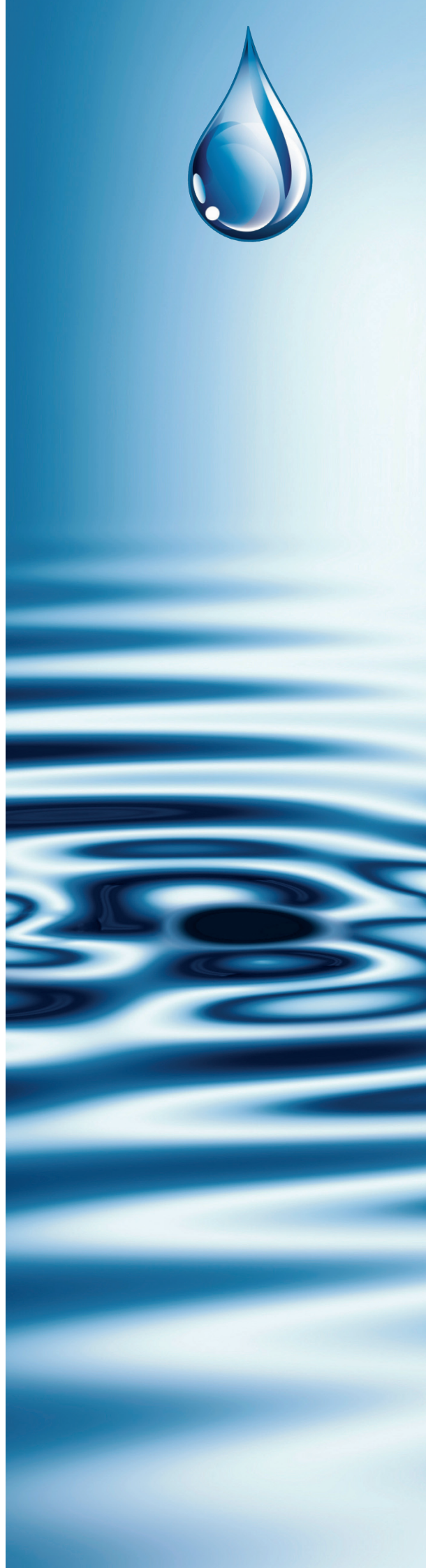


4" motor



6" motor







Swiss Pump Company AG
Moosweg 36
CH - 3645 Thun - Gwatt
Switzerland
Tel. +41 33 223 11 00
Fax +41 33 223 11 22
mail@swisspump.com

www.swisspump.com